



611PR

G-Biosciences ♦ 1-800-628-7730 ♦ 1-314-991-6034 ♦ technical@GBiosciences.com

A Geno Technology, Inc. (USA) brand name

Bacterial GenLysates™

Lyophilized Protein Lysates

(Cat. # ML-09)



think proteins! think G-Biosciences www.GBiosciences.com

INTRODUCTION

GenLysates™ are ready-to-use total protein extracts from a wide selection of tissues and cells. The GenLysates™ are ideal for SDS-PAGE and Western blot analysis. The total proteins extraction was performed according to Laemmli¹. The proteins are extracted in a denaturing buffer containing 62mM Tris.HCl and 2% SDS with a protease inhibitor cocktail to minimize proteolytic damage to proteins.

ITEM(S) SUPPLIED

Cat. #	Species	Region	Size
ML-09	E. Coli	Whole	150µg protein

STORAGE & STABILITY

GenLysates™ are shipped on blue ice and should be stored at -20°C upon arrival. Stable for 1 year if stored as recommended.

NOTE: After reconstitution, the GenLysate™ must be stored at -70°C.

PROTOCOL

1. Briefly, spin the tube containing GenLysate™ and reconstitute in 30µl deionized water to give 5µg/µl concentration.
2. Add an appropriate volume of sample buffer containing a reducing agent (e.g. 5% β-mercaptoethanol or 5-20mM DTT final concentration) in the reconstituted GenLysate™ tube.
3. The GenLysate™ may also be diluted if needed with an appropriate sample buffer containing a reducing agent.
4. Before loading the sample on the gel, put the tube in a boiling water bath for approx 5 minutes and briefly spin it again. Vortex the tube and the sample is now ready for loading on to the gel.

NOTE: Avoid frequent thawing and freezing of the GenLysate™. It is recommended to make appropriate aliquots of lysate after reconstitution and then freeze them at -70°C.

CERTIFICATE OF ANALYSIS

- The protein concentration of GenLysate™ samples was measured using NI™-Protein Assay (G-Biosciences' Cat. # 786-005) with BSA as a standard.
- The lysate was run on a 4-20% polyacrylamide gel and after electrophoresis the gel was stained with RapidStain™ (G-Biosciences' Cat. # 786-31). The protein bands were sharp and well resolved and there was no smear. Proteins from 5-200kD were visible.
- When appropriate, the protein lysates are also tested by Western blot analysis; protein transfer blots are probed for the presence of actin or tubulin.

PRODUCT WARRANTY:

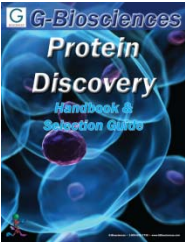
GenLysates™ are warranted to perform at least once using kits and reagents from G-Biosciences.

REFERENCE

1. Laemmli, U.K. (1970) Nature. 227: 680

RELATED PRODUCTS

Download our Protein Discovery Handbook.



<http://info.gbiosciences.com/complete-protein-discovery-handbook>

For other related products, visit our website at www.GBiosciences.com or contact us.

Last saved: 8/10/2012 CMH



www.GBiosciences.com